

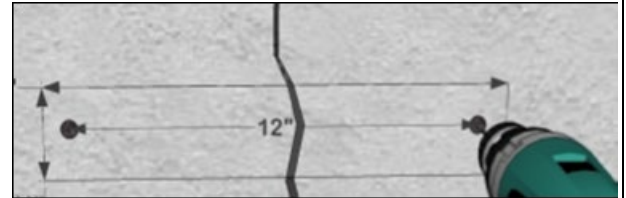
TorqueStitch Installation Guide



Follow these steps for a successful installation of TorqueStitch Mechanical Stitches:

1. Locating the Stitch:

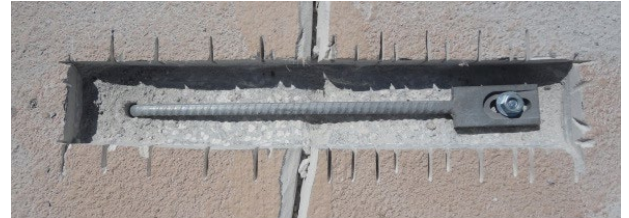
- Trace a rectangle measuring 13" x 1-1/2" on the concrete surface. Mark two holes 12" apart as indicated in the diagram.



Trace Location of Holes

2. Drilling Holes:

- Use a 1/2" masonry bit to drill both marked holes into the concrete to a depth of approximately 4 inches.



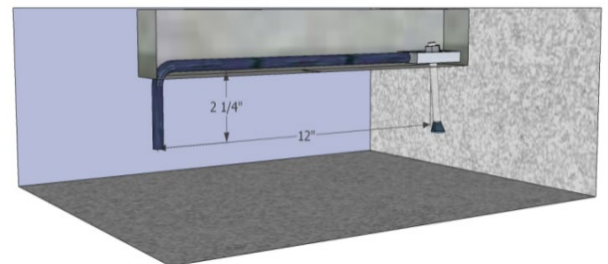
Cut and Chip Rectangular Area

3. Creating the Box Niche:

- Cut and chip a rectangular area approximately 1-1/2" deep using a masonry saw and chipping hammer. For cleaner cuts, pre-slice the rectangular area with the saw before chipping. Clean out all debris thoroughly. Expand one hole with a 5/8" drill, ensuring the holes are 2 1/4" deep below the niche bottom. Avoid over drilling.

4. Anchor and Stitch Placement:

- Place the sleeve anchor through the bottom of the stitch. Thread the nut onto the top of the shaft for 3-4 turns, ensuring the end marked XXX is at the bottom of the anchor. Insert the sleeve anchor into the 5/8" hole, hook into the 1/2" hole, and gently tap the nut's head until the sleeve is fully inserted and flush with the niche bottom.



Insert Stitch and Tighten

5. Securing the Stitch:

- With a ratchet and a 3/4" socket, tighten the nut on the anchor for about 3-4 turns up to 50 Ft-Lb torque. Be meticulous in placing each stitch, as the Mechanical Stitch installation is meant to be permanent. Once installed and tightened, the anchor is not designed to be removed or relocated.

6. Repeating the Procedure:

- Repeat the procedure for each stitch, spacing them approximately 1 foot apart along the crack (typically 10 Mechanical Stitches for a 10-foot crack).

7. Completing the Repair:

- For a comprehensive repair, fill the niche with epoxy or urethane mortar, ideally suited for areas subject to chemical spills, heavy equipment, and continuous traffic.

Additional Notes:

- Slab Thickness:** A minimum slab thickness of 5 inches is recommended for Mechanical Stitch installation. For thinner slabs, drill the anchor hole, install, and tighten the nut. If the threaded shaft extends upward post-tightening, it can be ground down flush with the nut. Ensure the niche bottom is as flat as possible for optimal installation performance.

This guide provides a step-by-step approach to installing the TorqueStitch Mechanical Stitches, ensuring durable and effective repair for concrete cracks.

